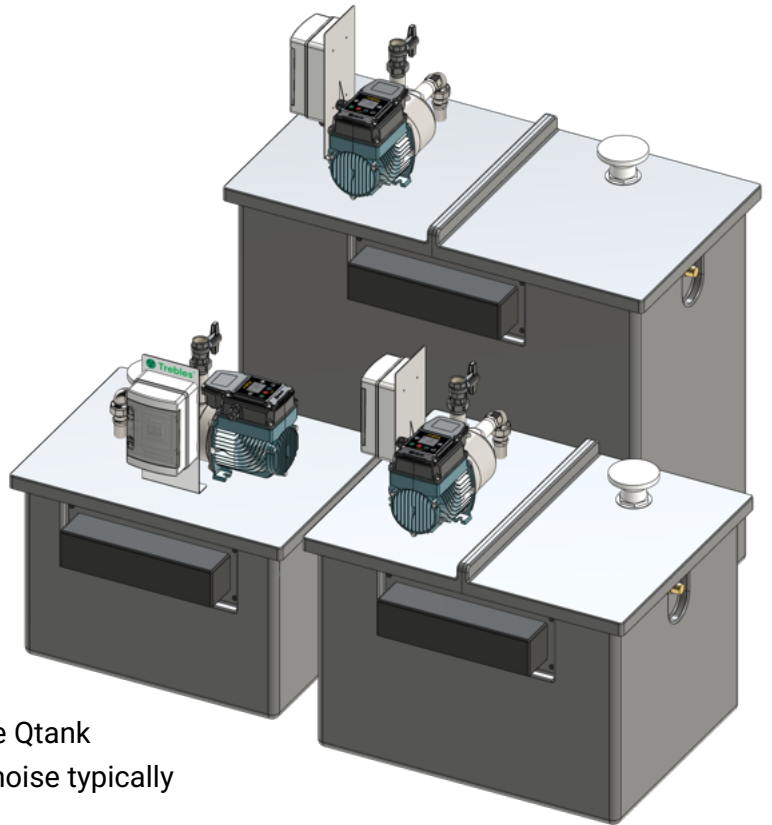


Qtank

Cat5 Booster Set

The Trebles Qtank range of Cat5 booster sets provides quiet efficient performance whilst maximising tank capacity in the smallest possible footprint.

The Qtank incorporates a variable speed self-priming pump mounted directly on the lid of the storage tank. This pump features built-in controls for intelligent pressure set point adjustment and displays status and alarms. The Qtank is completely water-cooled eliminating the fan noise typically associated with pumps and motors.



The tank is constructed from fibreglass with 25mm insulation and complies with Category 5 / AB Air Gap regulations. It incorporates a screened Weir, screened overflow and screened lid vent.

The unit has a 3/4-inch Equilibrium Float Valve inlet to provide sufficient incoming flow to meet the outgoing demand. Available in three different tank sizes the larger 227L and 500L feature a split lid arrangement for easy maintenance.

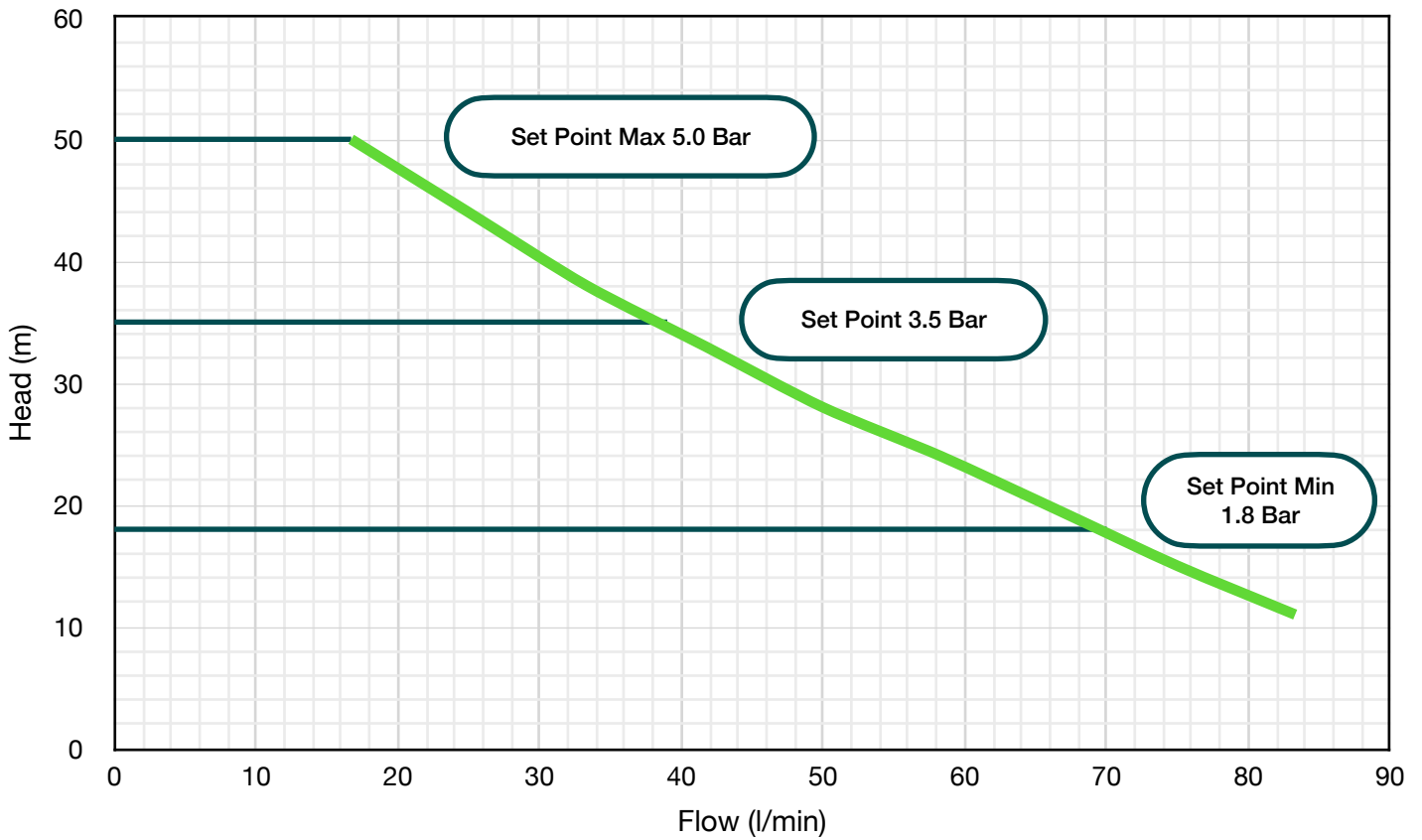
The Trebles Qtank is an all-round quick and simple solution to Cat5 boosting requirements.

- ✓ Single Pump
- ✓ Cat5 AB Air Gap
- ✓ 136L / 227L / 500L
- ✓ Screened Overflow
- ✓ Screened Lid Vent
- ✓ 25mm Insulation
- ✓ Variable Speed
- ✓ Constant Pressure
- ✓ Dry Run Protection
- ✓ Self Priming
- ✓ Internal Pressure Vessel
- ✓ 2 Year Guarantee



		5261-136	5261-227	5261-500
General	Pumps	1		
	Mounting	Floor Mounted		
	Dry Weight (kg)	43	52	100
Performance	Max Pressure (m)	55		
	Max Flow (l/min)	83		
Operating Conditions	Pressure Rating	8.0 Bar		
	Ambient Temperature (Max)	40°C		
	Water Temperature (Min / Max)	0°C / 35°C		
Connections	Inlet	3/4" Male BSP Equilibrium Float Valve		
	Outlet	1" Female BSP		
	Overflow	1-1/2" Female BSP		
Tank	Capacity (Nominal)	30G 136L	50G 227L	110G 500L
	Capacity (Actual)	15G 68L	30G 140L	83G 380L
	Fluid Category	CAT 5 / AB Air Gap		
	Other	25mm Insulation Screened Lid Vent WRAS Approved BS EN 13280:2001 RAL 7016 - Anthracite Grey		
Materials	Check Valves	AISI 304		
	Isolation Valves	CW617N UNI EN 12165		
	Fittings	AISI 304		
	Cable	H07RN8-F		
Electrical	Supply	230/1/50		
	Pump Power	0.65 kW		
	Full Load Current (A)	2.8		

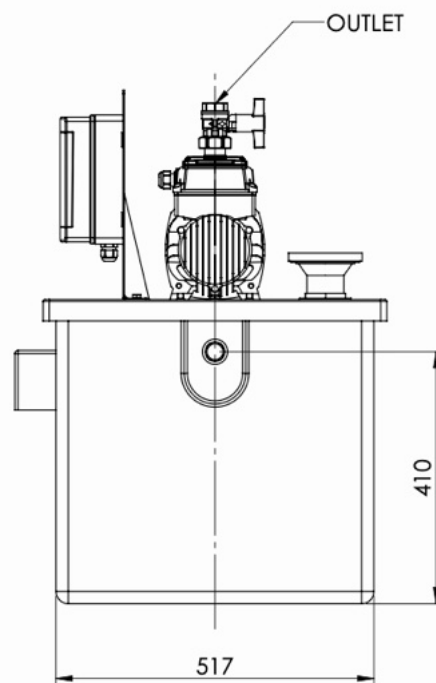
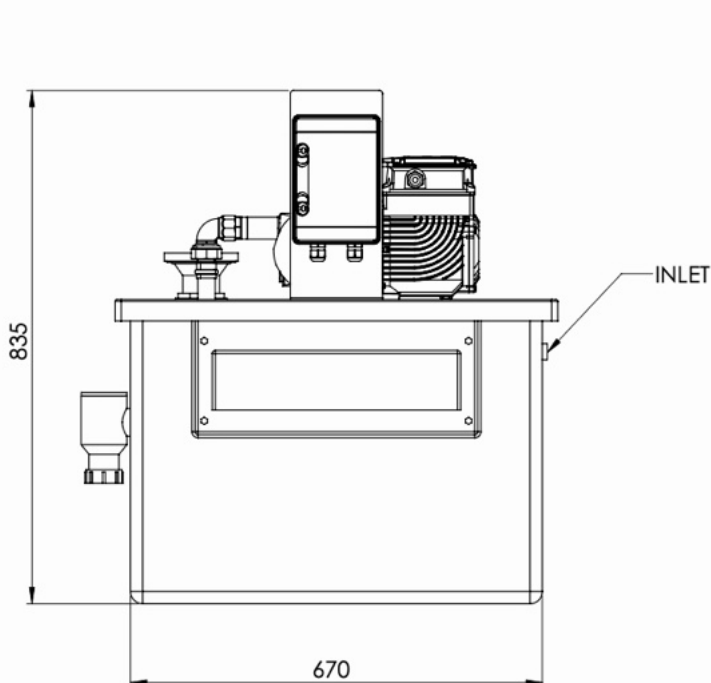
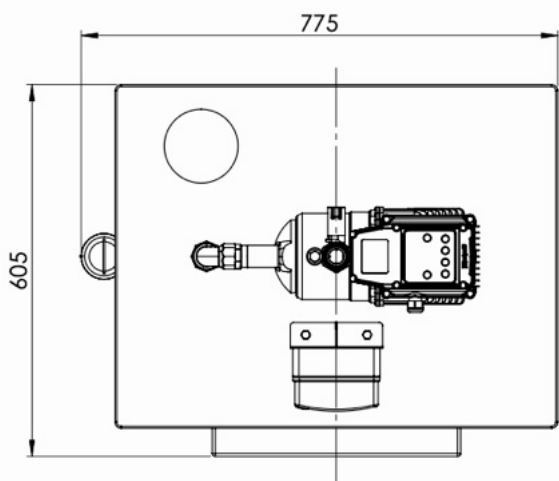
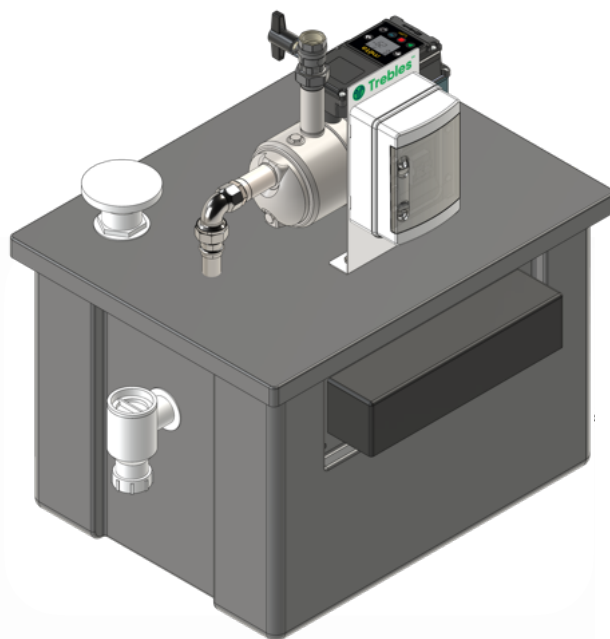
Performance Curve



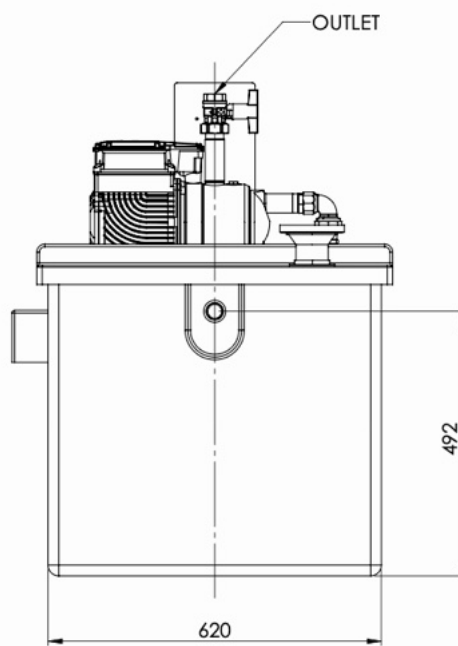
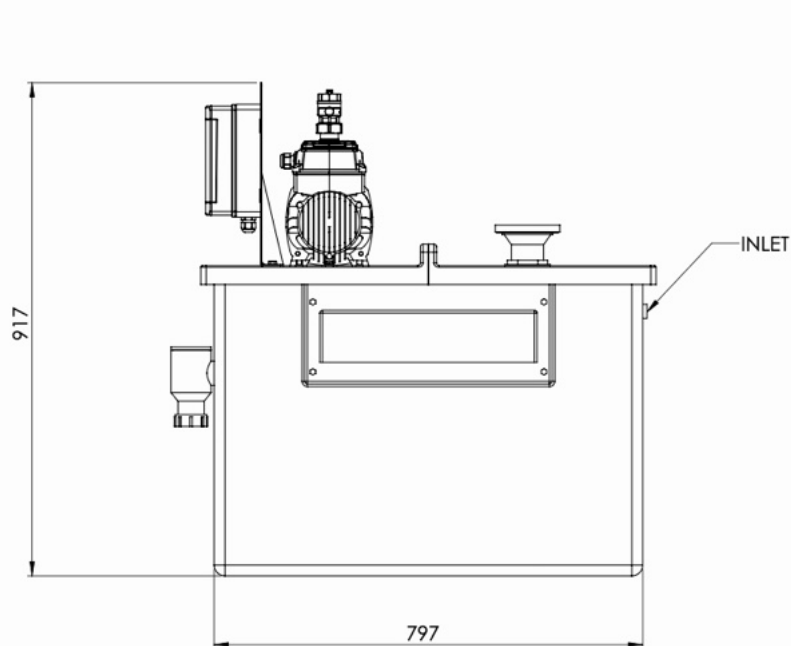
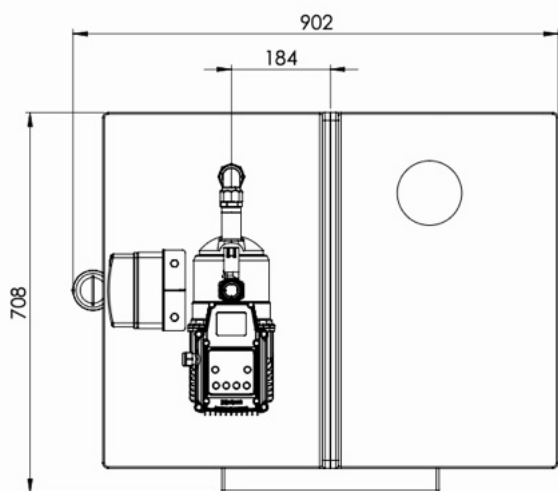
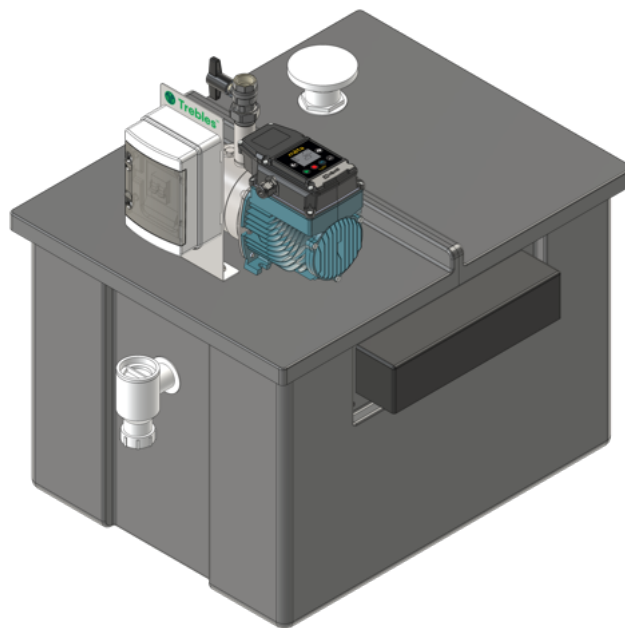
Tank Fill Rate - 3/4" Equilibrium Float Valve

Inlet Pressure (Bar)	0.5	1.0	1.5	2.0	2.5	3.0	4.0	5.0
Inlet Flow (l/min)	56.8	80.5	98.7	113.7	127.3	140.9	159.1	177.3

5261-136



5261-227



5261-500

